

SOLIDRIGS GD100

PREMIUM DRIVE

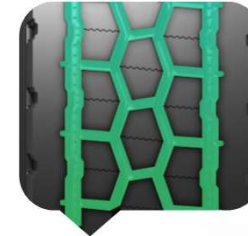
The Gremax SolidRigs™ GD100 is a close-shoulder drive tire designed for line-haul and regional trucks and buses, especially under mixed-terrain services. Strong blocks and deep grooves provide aggressive traction while maintaining an even wear in long-haul operations.

FEATURES

- Large and rugged hexagonal blocks** provide superior tractions for long haul application.
- Four deep grooves** featuring two intermediate zig-zag alignments and two straight alignments on the side, provide higher water and mud drainage efficiency.
- Wavy siping design across center blocks** enhances strength and ruggedness, helps heat dissipation and increases resistance to aging and irregular wear.
- Shoulder notches** minimize impact of scuffing and abrasions during turns.
- Solid close-shoulder design** helps to distribute weight and torque evenly to fight irregular wear and squirm.
- Raised decoupling ring on the shoulder** protects the sidewall from damage on hazardous road conditions.



BENEFITS



AGGRESSIVE TRENDS
HANDLING EFFICIENCY



RUGGED BLOCKS
SUPERIOR TRACTION



SOLID SHOULDERS
WEAR RESISTANCE

SPECIFICATIONS

SIZE	LOAD INDEX	SPEED RATING	PLY RATING	TREAD DEPTH (32NDS)	STANDARD RIM	SECTION WIDTH (INCH)	OVERALL DIAMETER (INCH)	MAX LOAD (LBS)	MAX PRESSURE (PSI)
295/75R22.5	144/141	M	14	26	9	12	40	6175 / 5675	110
295/75R22.5	146/143	M	16	26	9	12	40	6610 / 6005	120
11R22.5	144/142	M	14	26	8.25	11	41	6175 / 5840	105
11R22.5	146/143	M	16	26	8.25	11	41	6610 / 6005	120
11R24.5	146/143	M	14	26	8.25	11	43	6610 / 6005	105
11R24.5	149/146	M	16	26	8.25	11	43	7160 / 6610	120

AXLES AND APPLICATIONS



Line-haul trucks Regional trucks Intra- and interstate buses



5 YEAR
TREADWEAR
LIMITED WARRANTY

3 TIME
RETREADING
AVAILABLE ACROSS RANGE

PICC Product Liability Insurance covered by PICC Insurance Group against defective manufacture.

See warranty manual for complete detail on Limited Warranty Coverage.