

SOLIDRIGS GS500 REGIONAL STEER

The Gremax SolidRigs™ GS500 is a regional steer tire suitable for pick-up and delivery trucks. The pattern with five ribs and geometrical blocks offers superb steering and handling performance, with wide solid shoulders providing even load distribution, and enhanced sipes and wide grooves delivering excellent wet and dry performances.

FEATURES

Simple and straight five-rib tread pattern helps reduce heat generation and squirms, promoting superb steering and handling performance.

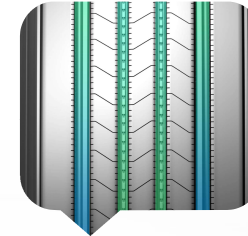
Enhanced decoupling groove helps to resist irregular wear and heat build-up, minimizing chances of deformation while improving durability and stability for better performance.

Optimized wear-resistant tread compound lowers rolling resistance and promotes fuel efficiency, enabling a longer service life.

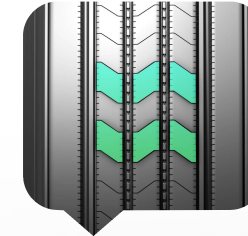
Geometrical blocks offer excellent traction and quick braking while driving on wet or snow-covered roads.



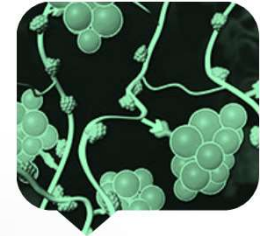
BENEFITS



DECOUPLING DESIGN
WEAR & HEAT RESISTANCE



GEOMETRICAL BLOCKS
STRONGER PERFORMANCE



OPTIMIZED COMPOUND
LONGER SERVICE LIFE

SPECIFICATIONS

SIZE	LOAD INDEX	SPEED RATING	PLY RATING	TREAD DEPTH (32NDS)	STANDARD RIM	SECTION WIDTH (INCH)	OVERALL DIAMETER (INCH)	MAX LOAD (LBS)	MAX PRESSURE (PSI)
295/75R22.5	144/141	M	14	19	9	12	40	6175 / 5675	110
295/75R22.5	144/141	M	16	19	9	12	40	6610 / 6005	120

AXLES AND APPLICATIONS



Pick-up and delivery trucks Regional trucks RVs and tow trucks
Regional trailers Low platform trailers Intra- and interstate buses



5 YEAR
TREADWEAR
LIMITED WARRANTY

3 TIME
RETREADING
AVAILABLE ACROSS RANGE

PICC Product Liability Insurance covered by PICC Insurance Group against defective manufacture.

See warranty manual for complete detail on Limited Warranty Coverage.